

FLASHING AS SPECIFIED

EXOAIR 110AT, DYMONIC 100 OR
FUNCTIONAL EQUIVALENT 3"
(76mm) MIN. ON EPS BOTH SIDES

TREMCO EXOAIR 230 OR
FUNCTIONAL EQUIVALENT

CONTINUOUS STEEL ANGLE
AS SPECIFIED

GYPSUM BOARD
FINISHED/FIRE STOP
INSTALLED AT JOISTS AS
PER CODE

U BRACKET ANCHOR INSERT

WET SET DOWELS TO
MATCH VERTICAL
REINFORCEMENT
BETWEEN POUR OR AS
SPECIFIED

HORIZ/VERT REINFORCEMENT
AS PER CODE OR AS SPECIFIED
(SEE NOTE 1)

ENGINEERED FRAMING
SYSTEM BY PREBUCK LLC OR
FUNCTIONAL EQUIVALENT;
ANCHORAGE AS PER CODE OR
SPECIFIED

EPS CANT STRIP

FIBER BOARD SUBSTRATE
w/ ROOF MEMBRANE
ON 3 1/2" (89mm) RIGID
INSULATION

COMPOSITE STEEL
ROOF DECK

OWSJ

INTERIOR INSULATION
REMOVED AT JOIST LOCATIONS

MIN. 1/2" (13mm) GYPSUM
BOARD

NUDURA 10" (254mm)
STANDARD FORM UNIT

NOTES:

1) FOR OPTIMAL REINFORCEMENT PLACEMENT IN THE NUDURA FORM, SPACING OF HORIZONTAL REINFORCEMENT TO BE SPECIFIED AT 18" (457mm) O.C. AND VERTICAL REINFORCEMENT TO BE SPECIFIED AT MULTIPLES OF 8" (203mm) O.C. REFER TO NUDURA REINFORCEMENT PLACEMENT DETAILS.

This detail is for general informational purposes, only. The project design professional determines, in its sole discretion, whether this detail or a functionally equivalent detail is best suited for the project with respect to any architecture, engineering, and design requirements, including any local building code requirements. If this document is not reviewed and the product is not approved for use by a licensed design professional, the customer agrees that the detail may contain substantive flaws requiring correction, and hereby releases Tremco CPG Inc. and Prebuck, LLC from any and all liability related to the design and installation of the product. This detail is subject to change without notice. Contact Tremco and Prebuck to ensure you have the most recent version.

Non-Combustible Construction - Roof Connections



Nudura Technical Support: 866-468-6299
International: +1 705-726-9499

Detail: Nudura 10" (254mm) Form Unit, Steel Joist Roof, Bearing Wall, Exterior Finish
as Specified

Drawn by: TVC

Checked by: KS

Scale: 1:8

Revision #: 05

Revised by: KAB

Date: 3/13/2024

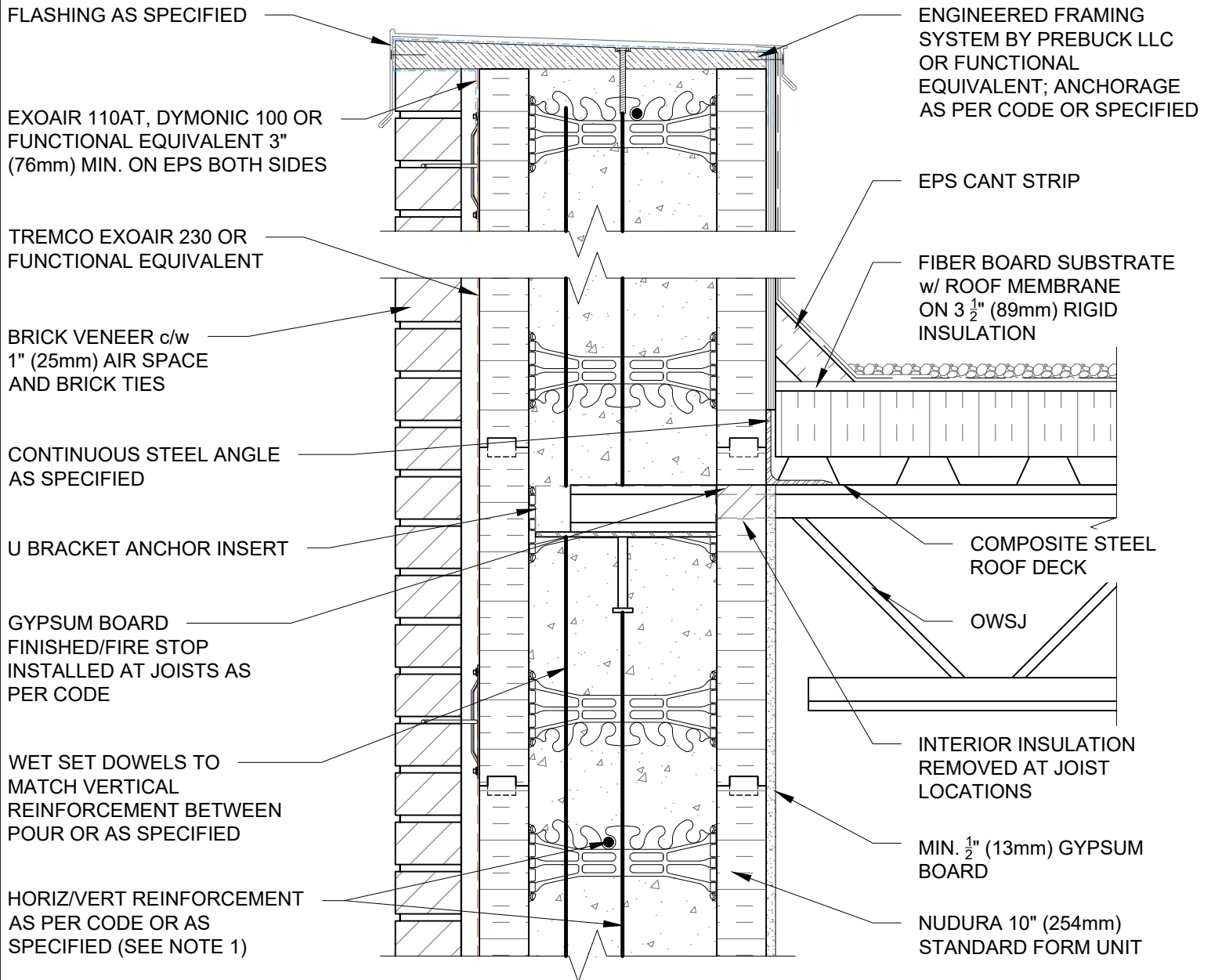
File Name:

F10C04



Construction Products Group

www.tremcocpg.com



NOTES:

1) FOR OPTIMAL REINFORCEMENT PLACEMENT IN THE NUDURA FORM, SPACING OF HORIZONTAL REINFORCEMENT TO BE SPECIFIED AT 18" (457mm) O.C. AND VERTICAL REINFORCEMENT TO BE SPECIFIED AT MULTIPLES OF 8" (203mm) O.C. REFER TO NUDURA REINFORCEMENT PLACEMENT DETAILS.

This detail is for general informational purposes, only. The project design professional determines, in its sole discretion, whether this detail or a functionally equivalent detail is best suited for the project with respect to any architecture, engineering, and design requirements, including any local building code requirements. If this document is not reviewed and the product is not approved for use by a licensed design professional, the customer agrees that the detail may contain substantive flaws requiring correction, and hereby releases Tremco CPG Inc. and Prebuck, LLC from any and all liability related to the design and installation of the product. This detail is subject to change without notice. Contact Tremco and Prebuck to ensure you have the most recent version.

Non-Combustible Construction - Roof Connections



Nudura Technical Support: 866-468-6299
International: +1 705-726-9499

Detail: Nudura 10" (254mm) Form Unit, Steel Joist Roof, Bearing Wall, Brick Veneer

Finish

Drawn by: TVC

Checked by: KS

Scale: 1:8

Revision #: 05

Revised by: KAB

Date: 3/13/2024

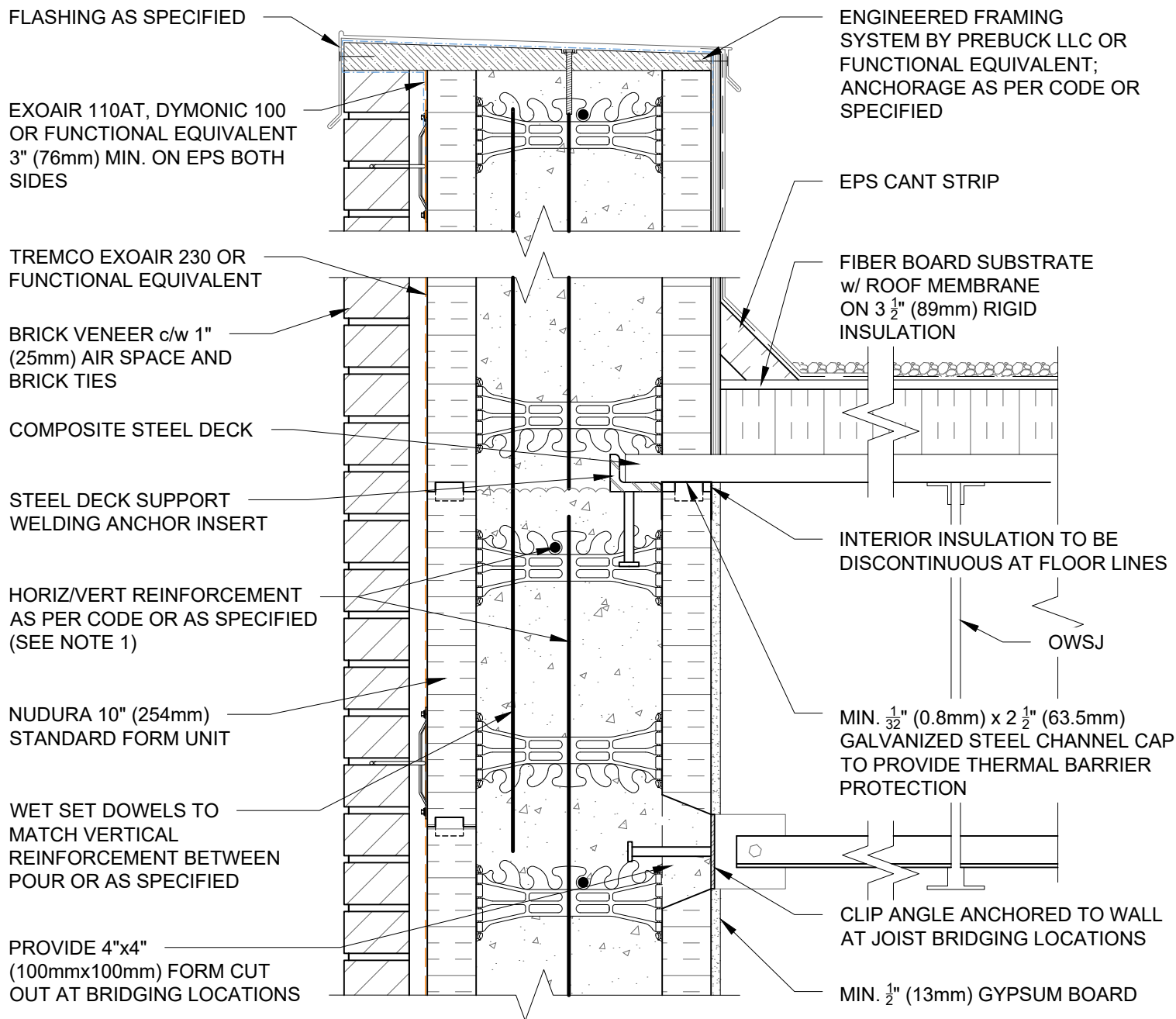
File Name:

F10C05



Construction Products Group

www.tremcocpg.com



NOTES:

1) FOR OPTIMAL REINFORCEMENT PLACEMENT IN THE NUDURA FORM, SPACING OF HORIZONTAL REINFORCEMENT TO BE SPECIFIED AT 18" (457mm) O.C. AND VERTICAL REINFORCEMENT TO BE SPECIFIED AT MULTIPLES OF 8" (203mm) O.C. REFER TO NUDURA REINFORCEMENT PLACEMENT DETAILS.

This detail is for general informational purposes, only. The project design professional determines, in its sole discretion, whether this detail or a functionally equivalent detail is best suited for the project with respect to any architecture, engineering, and design requirements, including any local building code requirements. If this document is not reviewed and the product is not approved for use by a licensed design professional, the customer agrees that the detail may contain substantive flaws requiring correction, and hereby releases Tremco CPG Inc. and Prebuck, LLC from any and all liability related to the design and installation of the product. This detail is subject to change without notice. Contact Tremco and Prebuck to ensure you have the most recent version.

Non-Combustible Construction - Roof Connections



Nudura Technical Support: 866-468-6299
International: +1 705-726-9499

Detail: Nudura 10" (254mm) Form Unit, Steel Joist Roof, Side Wall, Brick Veneer

Finish

Drawn by: TVC

Checked by: KS

Scale: 1:8

Revision #: 05

Revised by: KAB

Date: 3/13/2024

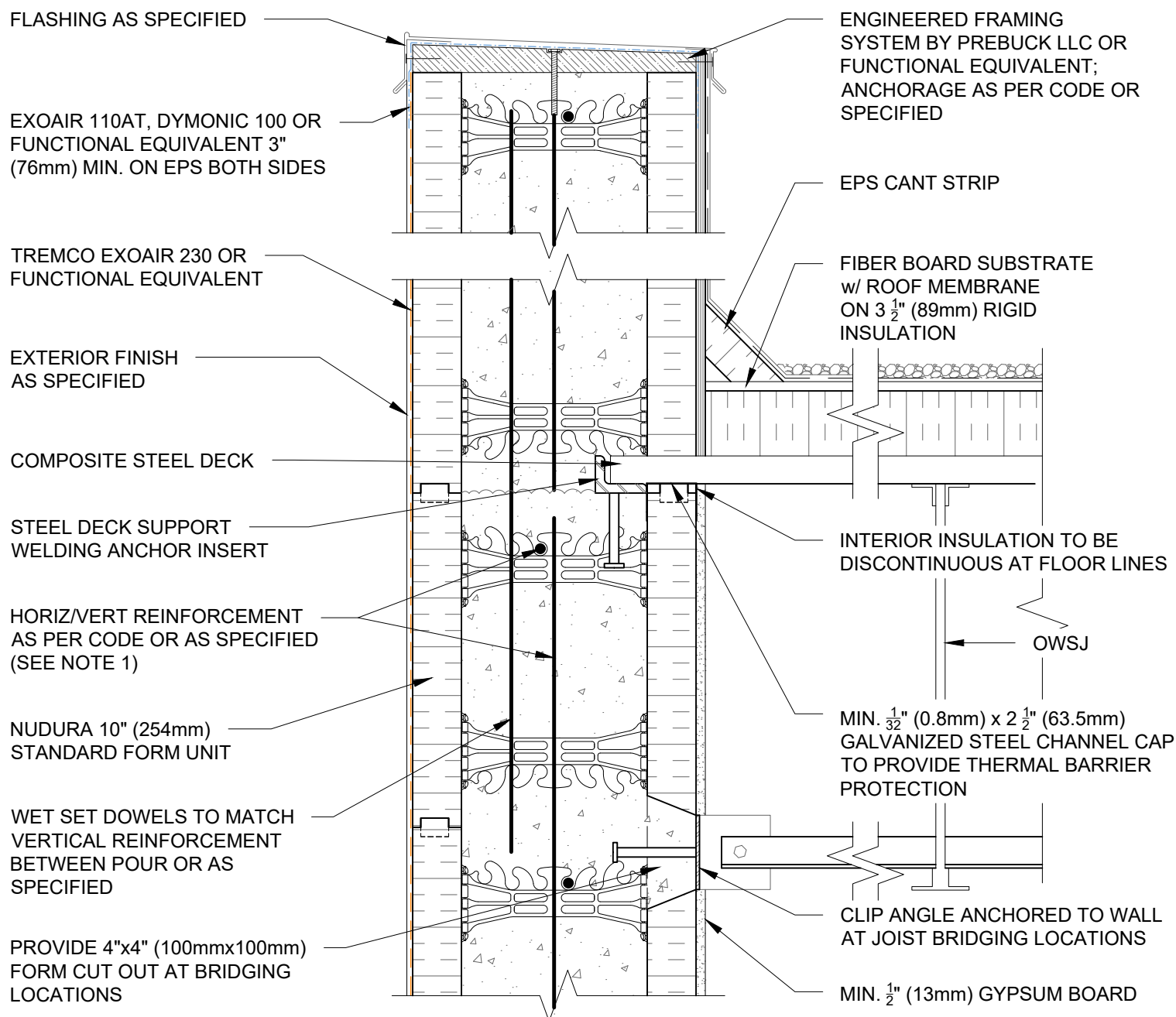
File Name:

F10C06



Construction Products Group

www.tremcocpg.com



NOTES:

1) FOR OPTIMAL REINFORCEMENT PLACEMENT IN THE NUDURA FORM, SPACING OF HORIZONTAL REINFORCEMENT TO BE SPECIFIED AT 18" (457mm) O.C. AND VERTICAL REINFORCEMENT TO BE SPECIFIED AT MULTIPLES OF 8" (203mm) O.C. REFER TO NUDURA REINFORCEMENT PLACEMENT DETAILS.

This detail is for general informational purposes, only. The project design professional determines, in its sole discretion, whether this detail or a functionally equivalent detail is best suited for the project with respect to any architecture, engineering, and design requirements, including any local building code requirements. If this document is not reviewed and the product is not approved for use by a licensed design professional, the customer agrees that the detail may contain substantive flaws requiring correction, and hereby releases Tremco CPG Inc. and Prebuck, LLC from any and all liability related to the design and installation of the product. This detail is subject to change without notice. Contact Tremco and Prebuck to ensure you have the most recent version.

Non-Combustible Construction - Roof Connections



Nudura Technical Support: 866-468-6299
International: +1 705-726-9499

Detail: Nudura 10" (254mm) Form Unit, Steel Joist Roof, Side Wall, Exterior Finish as Specified

Drawn by: TVC

Checked by: KS

Scale: 1:8

Revision #: 05

Revised by: KAB

Date: 3/13/2024

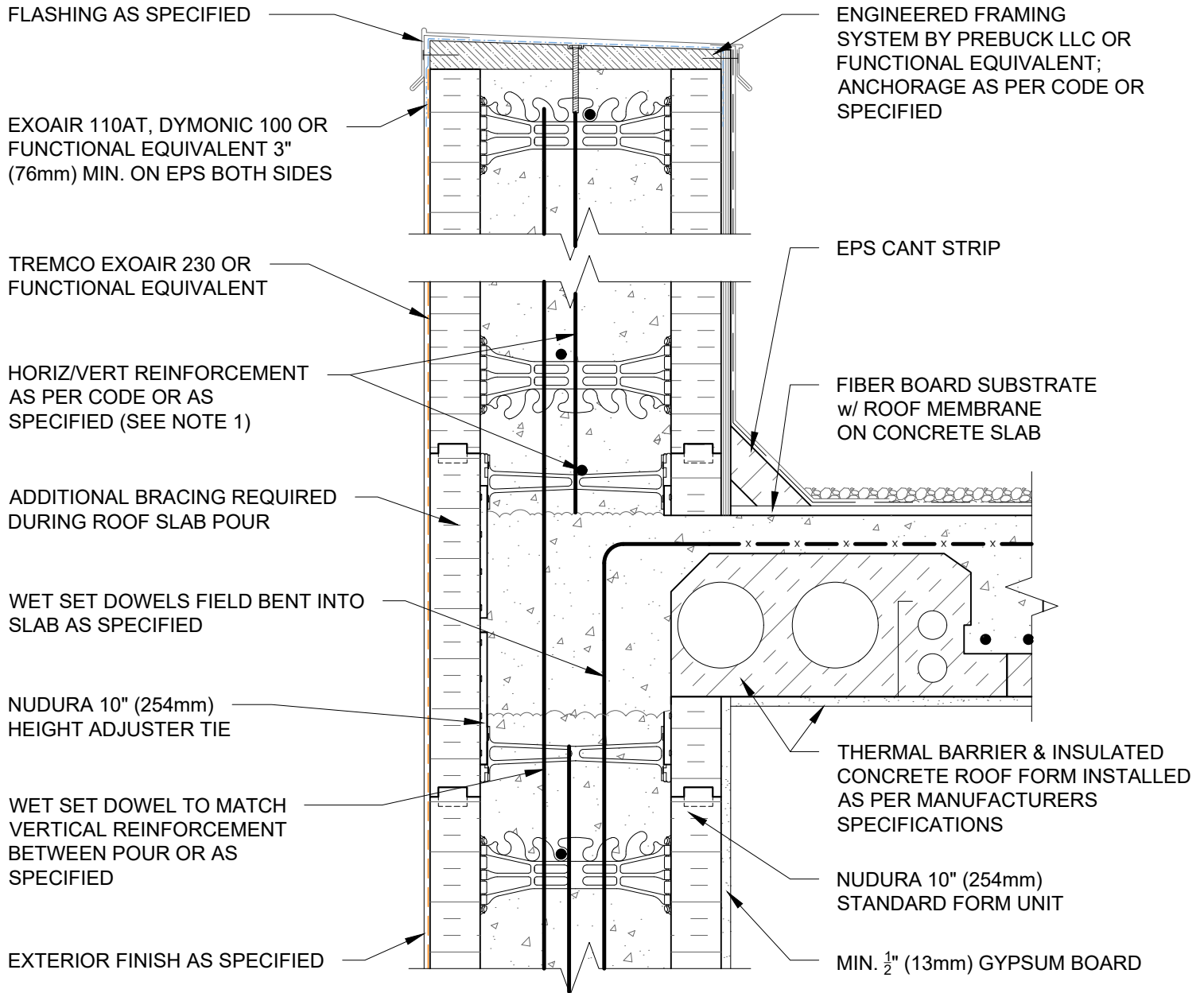
File Name:

F10C07



Construction Products Group

www.tremcocpg.com



NOTES:

1) FOR OPTIMAL REINFORCEMENT PLACEMENT IN THE NUDURA FORM, SPACING OF HORIZONTAL REINFORCEMENT TO BE SPECIFIED AT 18" (457mm) O.C. AND VERTICAL REINFORCEMENT TO BE SPECIFIED AT MULTIPLES OF 8" (203mm) O.C. REFER TO NUDURA REINFORCEMENT PLACEMENT DETAILS.

This detail is for general informational purposes, only. The project design professional determines, in its sole discretion, whether this detail or a functionally equivalent detail is best suited for the project with respect to any architecture, engineering, and design requirements, including any local building code requirements. If this document is not reviewed and the product is not approved for use by a licensed design professional, the customer agrees that the detail may contain substantive flaws requiring correction, and hereby releases Tremco CPG Inc. and Prebuck, LLC from any and all liability related to the design and installation of the product. This detail is subject to change without notice. Contact Tremco and Prebuck to ensure you have the most recent version.

Non-Combustible Construction - Roof Connections



Nudura Technical Support: 866-468-6299
International: +1 705-726-9499

Detail: Nudura 10" (254mm) Form Unit, ICRS Connection, ICRS Resting on Form,
Exterior Side Wall, Exterior Finish as Specified

Drawn by: TVC

Checked by: KS

Scale: 1:8

Revision #: 04

Revised by: KAB

Date: 3/13/2024

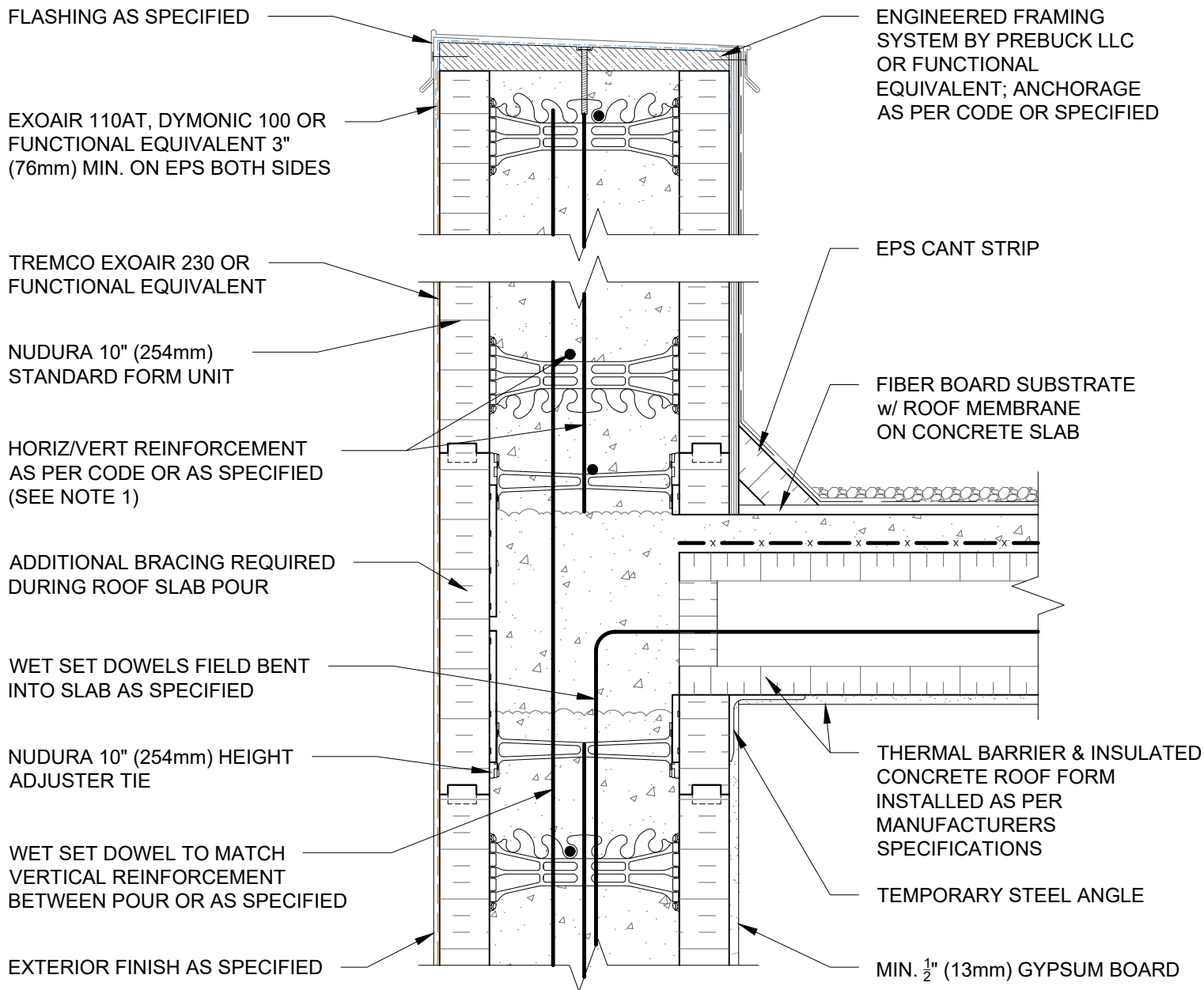
File Name:

F10D01



Construction Products Group

www.tremcocpg.com



NOTES:

1) FOR OPTIMAL REINFORCEMENT PLACEMENT IN THE NUDURA FORM, SPACING OF HORIZONTAL REINFORCEMENT TO BE SPECIFIED AT 18" (457mm) O.C. AND VERTICAL REINFORCEMENT TO BE SPECIFIED AT MULTIPLES OF 8" (203mm) O.C. REFER TO NUDURA REINFORCEMENT PLACEMENT DETAILS.

This detail is for general informational purposes, only. The project design professional determines, in its sole discretion, whether this detail or a functionally equivalent detail is best suited for the project with respect to any architecture, engineering, and design requirements, including any local building code requirements. If this document is not reviewed and the product is not approved for use by a licensed design professional, the customer agrees that the detail may contain substantive flaws requiring correction, and hereby releases Tremco CPG Inc. and Prebuck, LLC from any and all liability related to the design and installation of the product. This detail is subject to change without notice. Contact Tremco and Prebuck to ensure you have the most recent version.

Non-Combustible Construction - Roof Connections



Nudura Technical Support: 866-468-6299
International: +1 705-726-9499

Detail: Nudura 10" (254mm) Form Unit, ICRS Connection, ICRS Resting on Form, Exterior Bearing Wall, Exterior Finish as Specified

Drawn by: TVC

Checked by: KS

Scale: 1:8

Revision #: 04

Revised by: KAB

Date: 3/13/2024

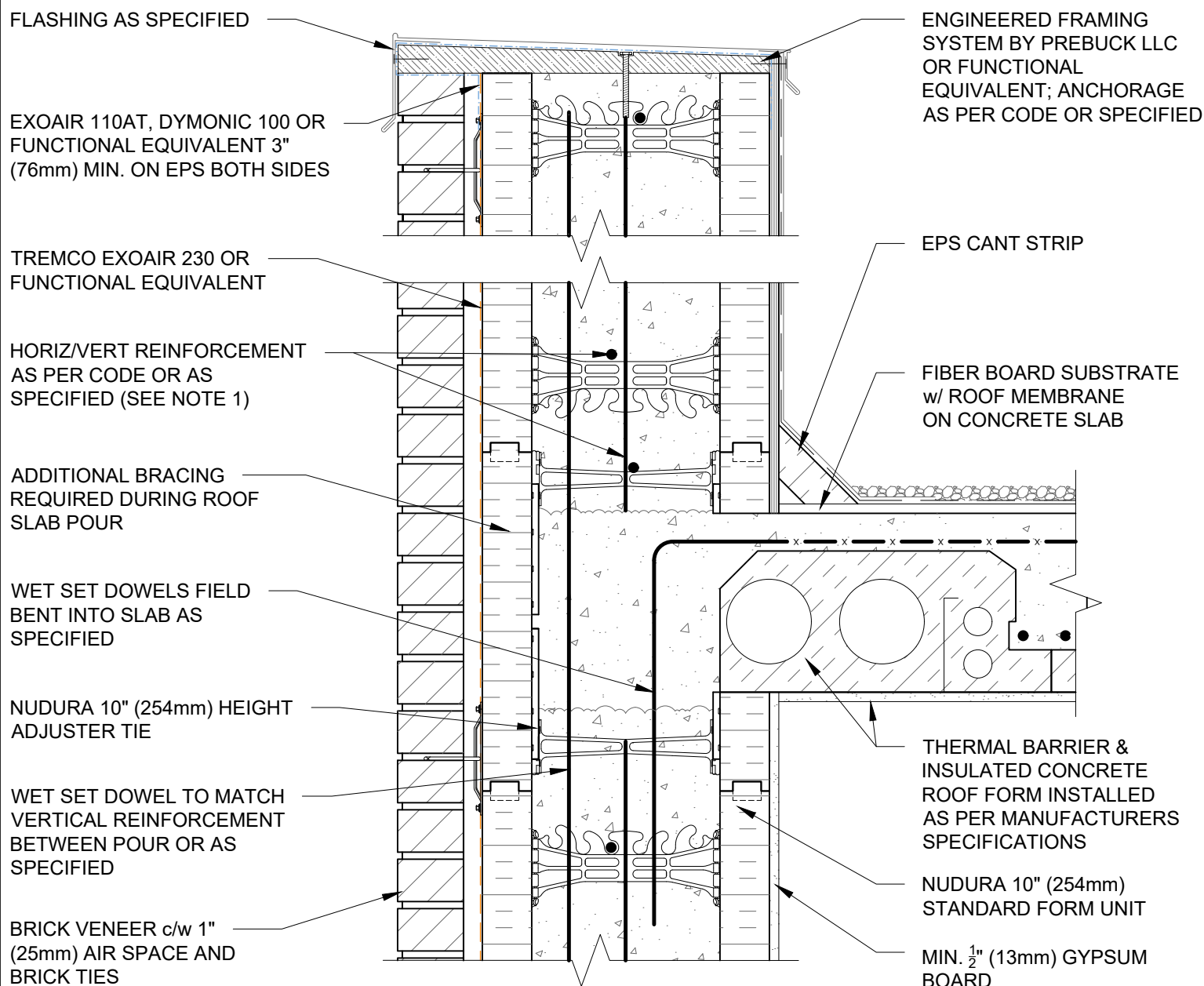
File Name:

F10D02



Construction Products Group

www.tremcocpg.com



NOTES:

1) FOR OPTIMAL REINFORCEMENT PLACEMENT IN THE NUDURA FORM, SPACING OF HORIZONTAL REINFORCEMENT TO BE SPECIFIED AT 18" (457mm) O.C. AND VERTICAL REINFORCEMENT TO BE SPECIFIED AT MULTIPLES OF 8" (203mm) O.C. REFER TO NUDURA REINFORCEMENT PLACEMENT DETAILS.

This detail is for general informational purposes, only. The project design professional determines, in its sole discretion, whether this detail or a functionally equivalent detail is best suited for the project with respect to any architecture, engineering, and design requirements, including any local building code requirements. If this document is not reviewed and the product is not approved for use by a licensed design professional, the customer agrees that the detail may contain substantive flaws requiring correction, and hereby releases Tremco CPG Inc. and Prebuck, LLC from any and all liability related to the design and installation of the product. This detail is subject to change without notice. Contact Tremco and Prebuck to ensure you have the most recent version.

Non-Combustible Construction - Roof Connections



Nudura Technical Support: 866-468-6299
International: +1 705-726-9499

Detail: Nudura 10" (254mm) Form Unit, ICRS Connection, ICRS Resting on Form, Exterior Side Wall, Brick Veneer Finish

Drawn by: TVC

Checked by: KS

Scale: 1:8

Revision #: 04

Revised by: KAB

Date: 3/13/2024

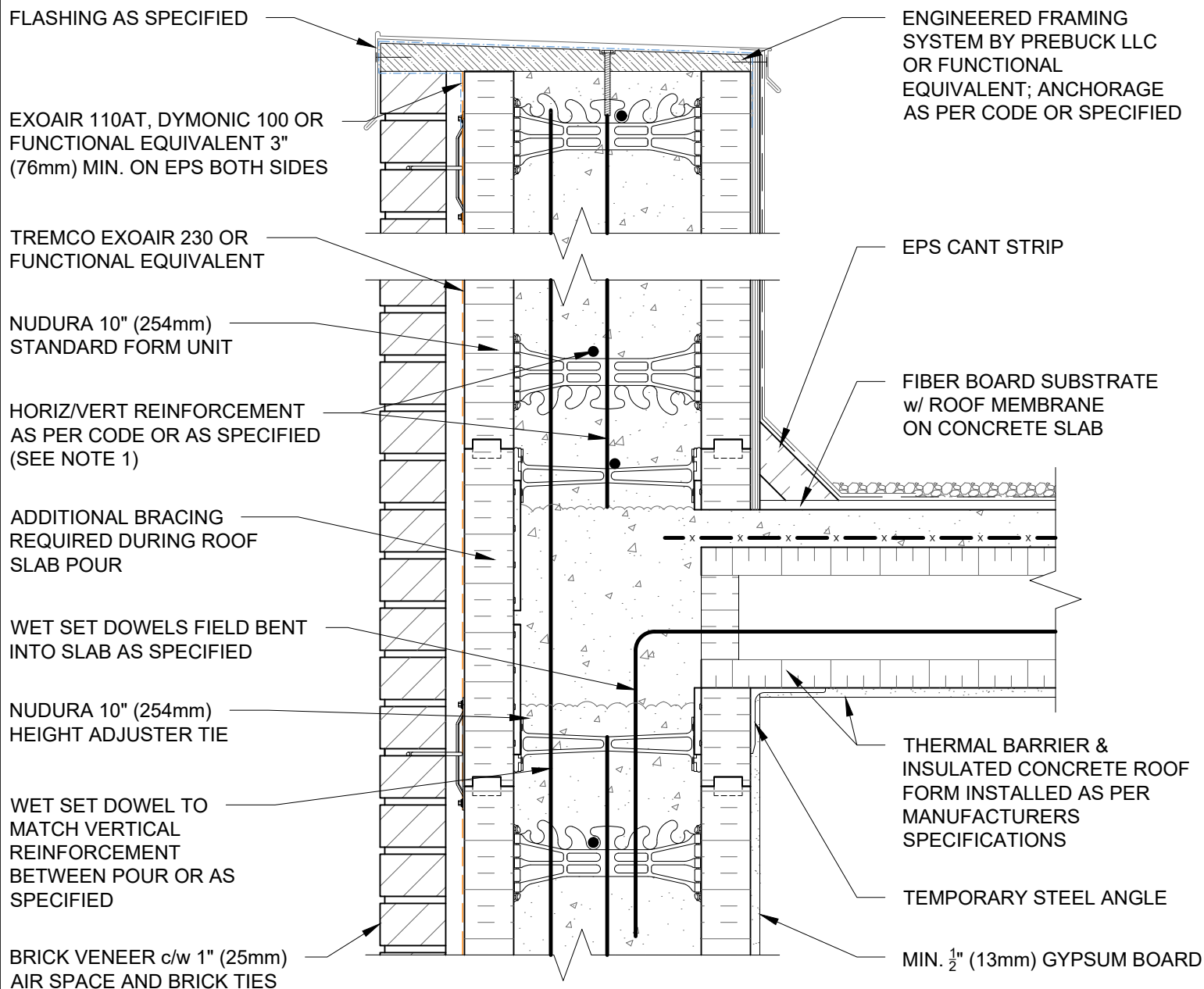
File Name:

F10D03



Construction Products Group

www.tremcocpg.com



NOTES:

1) FOR OPTIMAL REINFORCEMENT PLACEMENT IN THE NUDURA FORM, SPACING OF HORIZONTAL REINFORCEMENT TO BE SPECIFIED AT 18" (457mm) O.C. AND VERTICAL REINFORCEMENT TO BE SPECIFIED AT MULTIPLES OF 8" (203mm) O.C. REFER TO NUDURA REINFORCEMENT PLACEMENT DETAILS.

This detail is for general informational purposes, only. The project design professional determines, in its sole discretion, whether this detail or a functionally equivalent detail is best suited for the project with respect to any architecture, engineering, and design requirements, including any local building code requirements. If this document is not reviewed and the product is not approved for use by a licensed design professional, the customer agrees that the detail may contain substantive flaws requiring correction, and hereby releases Tremco CPG Inc. and Prebuck, LLC from any and all liability related to the design and installation of the product. This detail is subject to change without notice. Contact Tremco and Prebuck to ensure you have the most recent version.

Non-Combustible Construction - Roof Connections



Nudura Technical Support: 866-468-6299
International: +1 705-726-9499

Detail: Nudura 10" (254mm) Form Unit, ICRS Connection, ICRS Resting on Form, Exterior Bearing Wall, Brick Veneer Finish

Drawn by: TVC

Checked by: KS

Scale: 1:8

Revision #: 04

Revised by: KAB

Date: 3/13/2024

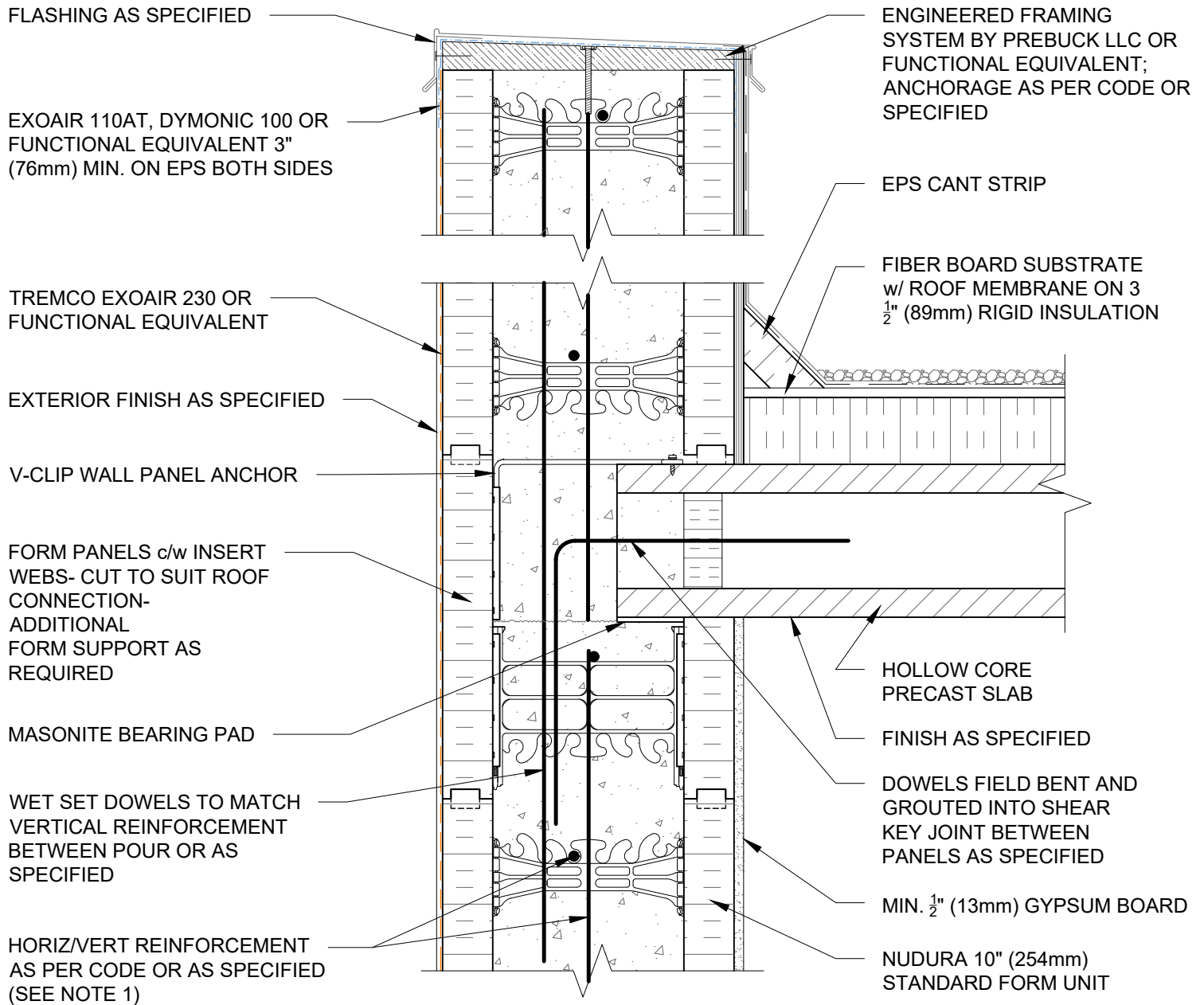
File Name:

F10D04



Construction Products Group

www.tremcocpg.com



NOTES:

1) FOR OPTIMAL REINFORCEMENT PLACEMENT IN THE NUDURA FORM, SPACING OF HORIZONTAL REINFORCEMENT TO BE SPECIFIED AT 18" (457mm) O.C. AND VERTICAL REINFORCEMENT TO BE SPECIFIED AT MULTIPLES OF 8" (203mm) O.C. REFER TO NUDURA REINFORCEMENT PLACEMENT DETAILS.

This detail is for general informational purposes, only. The project design professional determines, in its sole discretion, whether this detail or a functionally equivalent detail is best suited for the project with respect to any architecture, engineering, and design requirements, including any local building code requirements. If this document is not reviewed and the product is not approved for use by a licensed design professional, the customer agrees that the detail may contain substantive flaws requiring correction, and hereby releases Tremco CPG Inc. and Prebuck, LLC from any and all liability related to the design and installation of the product. This detail is subject to change without notice. Contact Tremco and Prebuck to ensure you have the most recent version.

Non-Combustible Construction - Roof Connections



Nudura Technical Support: 866-468-6299
International: +1 705-726-9499

Detail: Nudura 10" (254mm) Form Unit, Hollow Core Precast Roof, Exterior Bearing Wall, Exterior Finish as Specified

Drawn by: TVC

Checked by: KS

Scale: 1:8

Revision #: 04

Revised by: KAB

Date: 3/13/2024

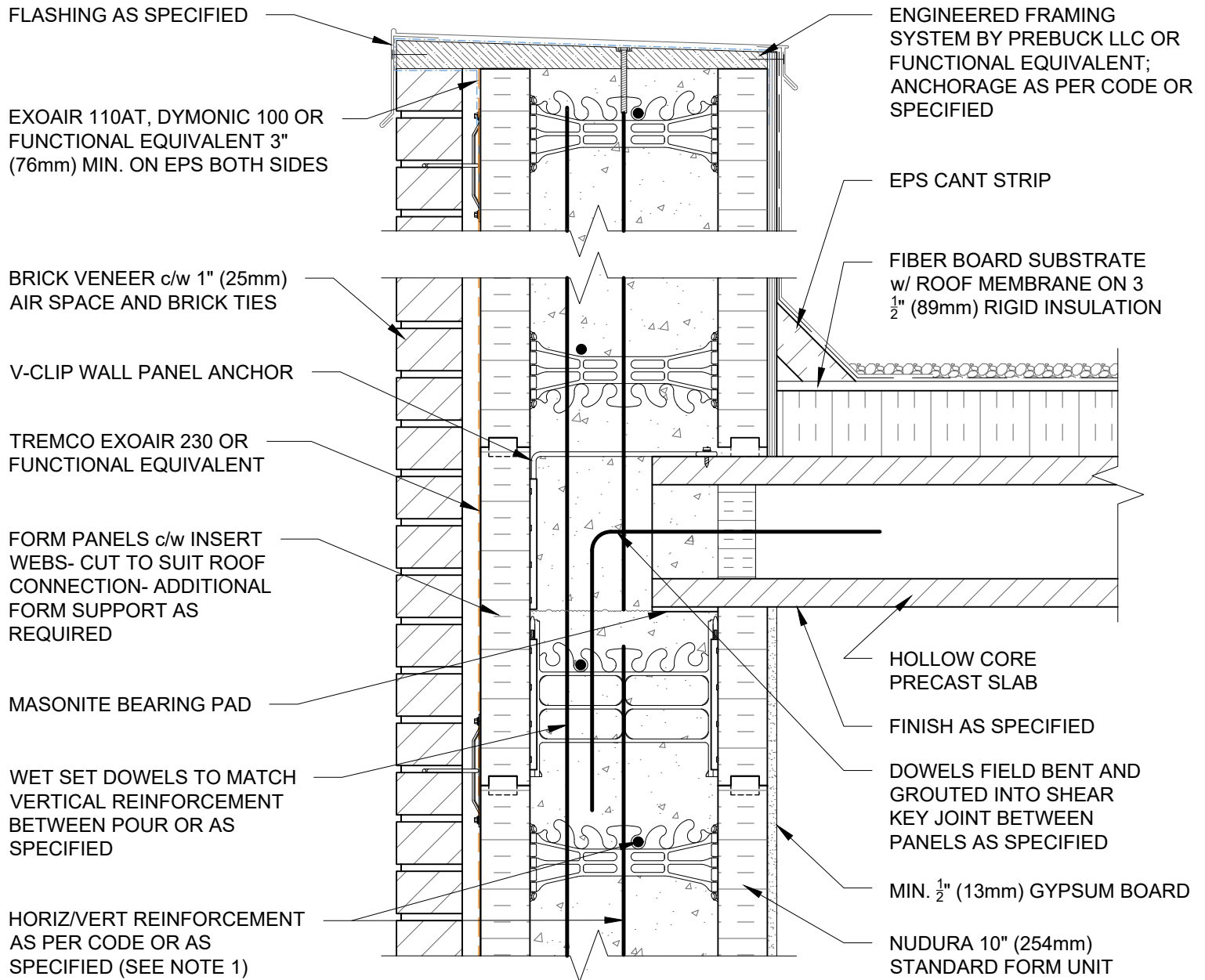
File Name:

F10E01



Construction Products Group

www.tremcocpg.com



NOTES:

1) FOR OPTIMAL REINFORCEMENT PLACEMENT IN THE NUDURA FORM, SPACING OF HORIZONTAL REINFORCEMENT TO BE SPECIFIED AT 18" (457mm) O.C. AND VERTICAL REINFORCEMENT TO BE SPECIFIED AT MULTIPLES OF 8" (203mm) O.C. REFER TO NUDURA REINFORCEMENT PLACEMENT DETAILS.

This detail is for general informational purposes, only. The project design professional determines, in its sole discretion, whether this detail or a functionally equivalent detail is best suited for the project with respect to any architecture, engineering, and design requirements, including any local building code requirements. If this document is not reviewed and the product is not approved for use by a licensed design professional, the customer agrees that the detail may contain substantive flaws requiring correction, and hereby releases Tremco CPG Inc. and Prebuck, LLC from any and all liability related to the design and installation of the product. This detail is subject to change without notice. Contact Tremco and Prebuck to ensure you have the most recent version.

Non-Combustible Construction - Roof Connections



Detail: Nudura 10" (254mm) Form Unit, Hollow Core Precast Roof, Exterior Bearing Wall, Brick Veneer Finish		
Drawn by: TVC	Checked by: KS	Scale: 1:8
Revision #: 04	Revised by: KAB	Date: 3/13/2024

File Name:

F10E02



FLASHING AS SPECIFIED

EXOAIR 110AT, DYMONIC 100 OR
FUNCTIONAL EQUIVALENT 3"
(76mm) MIN. ON EPS BOTH SIDES

TREMCO EXOAIR 230 OR
FUNCTIONAL EQUIVALENT

EXTERIOR FINISH AS SPECIFIED

V-CLIP WALL PANEL ANCHOR

FORM PANELS c/w INSERT
WEBS- CUT TO SUIT ROOF
CONNECTION-
ADDITIONAL
FORM SUPPORT AS
REQUIRED

WET SET DOWELS TO MATCH
VERTICAL REINFORCEMENT
BETWEEN POUR OR AS
SPECIFIED

HORIZ/VERT REINFORCEMENT
AS PER CODE OR AS SPECIFIED
(SEE NOTE 1)

ENGINEERED FRAMING
SYSTEM BY PREBUCK LLC OR
FUNCTIONAL EQUIVALENT;
ANCHORAGE AS PER CODE OR
SPECIFIED

EPS CANT STRIP

FIBER BOARD SUBSTRATE
w/ ROOF MEMBRANE ON 3
 $\frac{1}{2}$ " (89mm) RIGID INSULATION

HOLLOW CORE
PRECAST SLAB

FINISH AS SPECIFIED

DOWELS BENT AND
GROUTED INTO HOLLOW
CORE PRECAST PANELS
AS SPECIFIED

MIN. $\frac{1}{2}$ " (13mm) GYPSUM BOARD

NUDURA 10" (254mm)
STANDARD FORM UNIT

NOTES:

1) FOR OPTIMAL REINFORCEMENT PLACEMENT IN THE NUDURA FORM,
SPACING OF HORIZONTAL REINFORCEMENT TO BE SPECIFIED AT 18"
(457mm) O.C. AND VERTICAL REINFORCEMENT TO BE SPECIFIED AT
MULTIPLES OF 8" (203mm) O.C. REFER TO NUDURA REINFORCEMENT
PLACEMENT DETAILS.

This detail is for general informational purposes, only. The project design professional determines, in its sole discretion, whether this detail or a functionally equivalent detail is best suited for the project with respect to any architecture, engineering, and design requirements, including any local building code requirements. If this document is not reviewed and the product is not approved for use by a licensed design professional, the customer agrees that the detail may contain substantive flaws requiring correction, and hereby releases Tremco CPG Inc. and Prebuck, LLC from any and all liability related to the design and installation of the product. This detail is subject to change without notice. Contact Tremco and Prebuck to ensure you have the most recent version.

Non-Combustible Construction - Roof Connections



Nudura Technical Support: 866-468-6299
International: +1 705-726-9499

Detail: Nudura 10" (254mm) Form Unit, Hollow Core Precast Roof, Exterior Side Wall,
Exterior Finish as Specified

Drawn by: TVC

Checked by: KS

Scale: 1:8

Revision #: 04

Revised by: KAB

Date: 3/13/2024

www.tremcocpg.com

File Name:

F10E03



Construction Products Group

FLASHING AS SPECIFIED

EXOAIR 110AT, DYMONIC 100 OR
FUNCTIONAL EQUIVALENT 3"
(76mm) MIN. ON EPS BOTH SIDES

BRICK VENEER c/w 1" (25mm)
AIR SPACE AND BRICK TIES

V-CLIP WALL PANEL ANCHOR

TREMCO EXOAIR 230 OR
FUNCTIONAL EQUIVALENT

FORM PANELS c/w INSERT
WEBS- CUT TO SUIT ROOF
CONNECTION- ADDITIONAL
FORM SUPPORT AS
REQUIRED

WET SET DOWELS TO MATCH
VERTICAL REINFORCEMENT
BETWEEN POUR OR AS
SPECIFIED

HORIZ/VERT REINFORCEMENT
AS PER CODE OR AS
SPECIFIED (SEE NOTE 1)

ENGINEERED FRAMING
SYSTEM BY PREBUCK LLC OR
FUNCTIONAL EQUIVALENT;
ANCHORAGE AS PER CODE OR
SPECIFIED

EPS CANT STRIP

FIBER BOARD SUBSTRATE
w/ ROOF MEMBRANE ON 3
 $\frac{1}{2}$ " (89mm) RIGID INSULATION

HOLLOW CORE
PRECAST SLAB

FINISH AS SPECIFIED

DOWELS BENT AND
GROUTED INTO HOLLOW
CORE PRECAST PANELS
AS SPECIFIED

MIN. $\frac{1}{2}$ " (13mm) GYPSUM BOARD

NUDURA 10" (254mm)
STANDARD FORM UNIT

NOTES:

1) FOR OPTIMAL REINFORCEMENT PLACEMENT IN THE NUDURA FORM,
SPACING OF HORIZONTAL REINFORCEMENT TO BE SPECIFIED AT 18"
(457mm) O.C. AND VERTICAL REINFORCEMENT TO BE SPECIFIED AT
MULTIPLES OF 8" (203mm) O.C. REFER TO NUDURA REINFORCEMENT
PLACEMENT DETAILS.

This detail is for general informational purposes, only. The project design professional determines, in its sole discretion, whether this detail or a functionally equivalent detail is best suited for the project with respect to any architecture, engineering, and design requirements, including any local building code requirements. If this document is not reviewed and the product is not approved for use by a licensed design professional, the customer agrees that the detail may contain substantive flaws requiring correction, and hereby releases Tremco CPG Inc. and Prebuck, LLC from any and all liability related to the design and installation of the product. This detail is subject to change without notice. Contact Tremco and Prebuck to ensure you have the most recent version.

Non-Combustible Construction - Roof Connections



Nudura Technical Support: 866-468-6299
International: +1 705-726-9499

Detail: Nudura 10" (254mm) Form Unit, Hollow Core Precast Roof, Exterior Side Wall,
Brick Veneer Finish

Drawn by: TVC

Checked by: KS

Scale: 1:8

Revision #: 04

Revised by: KAB

Date: 3/13/2024

File Name:

F10E04



Construction Products Group

www.tremcocpg.com

FLASHING AS SPECIFIED

EXOAIR 110AT, DYMONIC 100 OR
FUNCTIONAL EQUIVALENT 3"
(76mm) MIN. ON EPS BOTH SIDES

TREMCO EXOAIR 230 OR
FUNCTIONAL EQUIVALENT

BRICK VENEER c/w 1" (25mm)
AIR SPACE AND BRICK TIES

ALLOW ROOF SLAB TO REST
ON TO BEARING WALL
CONCRETE

FORM PANELS c/w INSERT
WEBS- CUT TO SUIT ROOF
CONNECTION- ADDITIONAL
FORM SUPPORT AS REQUIRED

EPS FOAM REMOVED AT
JOIST LOCATION ONLY TO
ALLOW JOIST PLACEMENT

WET SET DOWELS TO MATCH
VERTICAL REINFORCEMENT
BETWEEN POUR OR AS
SPECIFIED

HORIZ/VERT REINFORCEMENT
AS PER CODE OR AS SPECIFIED
(SEE NOTE 1)

NUDURA 10" (254mm)
STANDARD FORM UNIT

ENGINEERED FRAMING
SYSTEM BY PREBUCK LLC OR
FUNCTIONAL EQUIVALENT;
ANCHORAGE AS PER CODE OR
SPECIFIED

EPS CANT STRIP

FIBER BOARD SUBSTRATE
w/ ROOF MEMBRANE
ON 3 1/2" (89mm) RIGID
INSULATION

PROPRIETARY STEEL
JOIST ROOF SYSTEM

CEILING FINISH AS PER STEEL
JOIST MANUFACTURERS
SPECIFICATION (SEE NOTE 2)

MIN. 1/2" (13mm) GYPSUM BOARD

NOTES:

1) FOR OPTIMAL REINFORCEMENT PLACEMENT IN THE NUDURA FORM,
SPACING OF HORIZONTAL REINFORCEMENT TO BE SPECIFIED AT 18"
(457mm) O.C. AND VERTICAL REINFORCEMENT TO BE SPECIFIED AT
MULTIPLES OF 8" (203mm) O.C. REFER TO NUDURA REINFORCEMENT
PLACEMENT DETAILS.

2) WHERE GYPSUM BOARD IS REQUIRED TO COMPLETE FIRE RATED
ASSEMBLY, EPS FOAM KERF CUT TO ENABLE CEILING FINISH TO
PROVIDE THERMAL BARRIER CONTACT TO CONCRETE.

This detail is for general informational purposes only. The project design professional determines, in its sole discretion, whether this detail or a functionally equivalent detail is best suited for the project with respect to any architecture, engineering, and design requirements, including any local building code requirements. If this document is not reviewed and the product is not approved for use by a licensed design professional, the customer agrees that the detail may contain substantive flaws requiring correction, and hereby releases Tremco CPG Inc. and Prebuck, LLC from any and all liability related to the design and installation of the product. This detail is subject to change without notice. Contact Tremco and Prebuck to ensure you have the most recent version.

Non-Combustible Construction - Roof Connections



Nudura Technical Support: 866-468-6299
International: +1 705-726-9499

Detail: Nudura 10" (254mm) Form Unit, Steel Joist Roof, Exterior Bearing Wall,
Brick Veneer Finish

Drawn by: TVC

Checked by: KS

Scale: 1:8

Revision #: 04

Revised by: KAB

Date: 3/13/2024

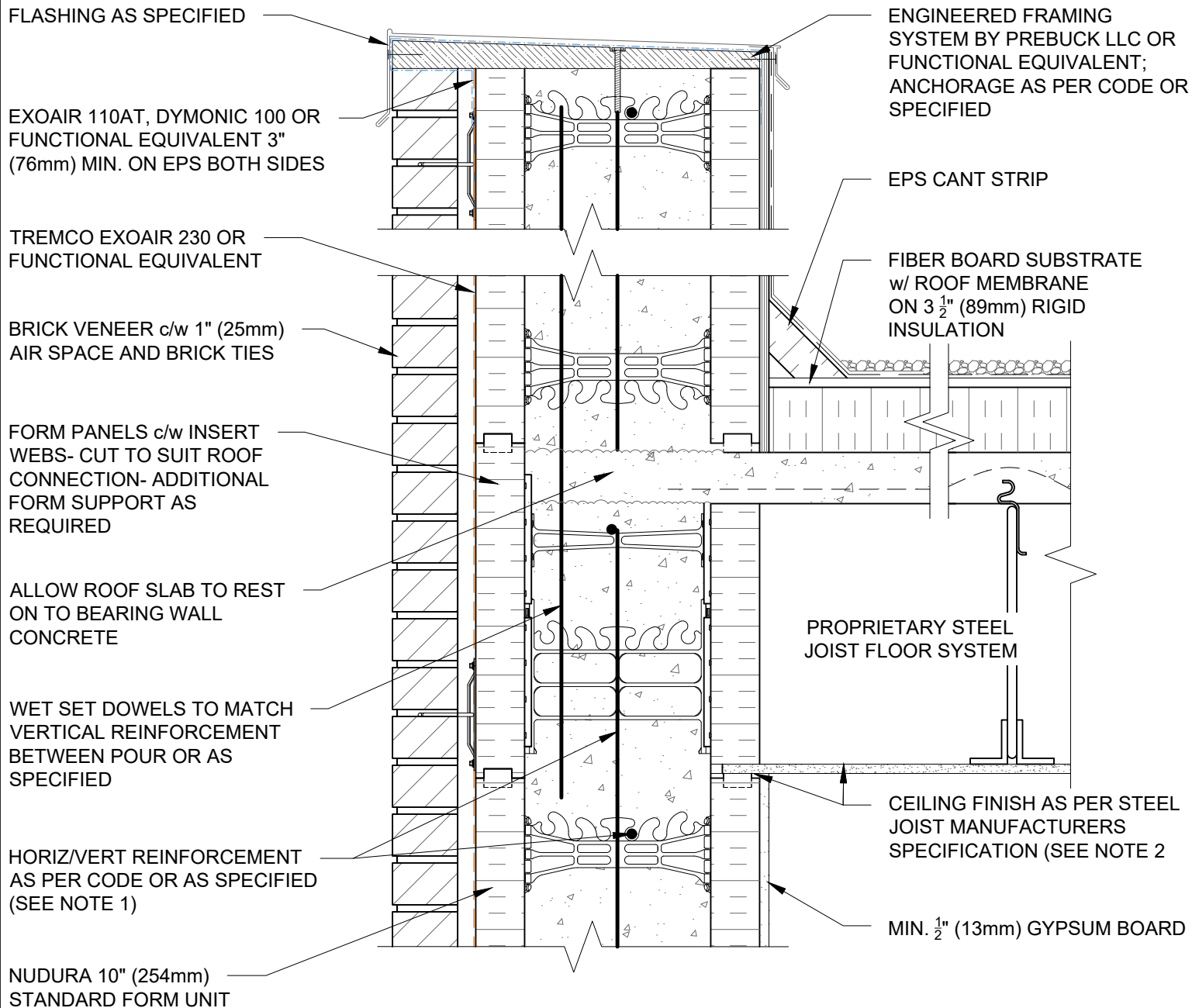
File Name:

F10F01



Construction Products Group

www.tremcocpg.com



NOTES:

1) FOR OPTIMAL REINFORCEMENT PLACEMENT IN THE NUDURA FORM, SPACING OF HORIZONTAL REINFORCEMENT TO BE SPECIFIED AT 18" (457mm) O.C. AND VERTICAL REINFORCEMENT TO BE SPECIFIED AT MULTIPLES OF 8" (203mm) O.C. REFER TO NUDURA REINFORCEMENT PLACEMENT DETAILS.

2) WHERE GYPSUM BOARD IS REQUIRED TO COMPLETE FIRE RATED ASSEMBLY, EPS FOAM KERF CUT TO ENABLE CEILING FINISH TO PROVIDE THERMAL BARRIER CONTACT TO CONCRETE.

This detail is for general informational purposes, only. The project design professional determines, in its sole discretion, whether this detail or a functionally equivalent detail is best suited for the project with respect to any architecture, engineering, and design requirements, including any local building code requirements. If this document is not reviewed and the product is not approved for use by a licensed design professional, the customer agrees that the detail may contain substantive flaws requiring correction, and hereby releases Tremco CPG Inc. and Prebuck, LLC from any and all liability related to the design and installation of the product. This detail is subject to change without notice. Contact Tremco and Prebuck to ensure you have the most recent version.

Non-Combustible Construction - Roof Connections

Detail: Nudura 10" (254mm) Form Unit, Steel Joist Roof, Exterior Side Wall, Brick Veneer Finish

File Name:

Drawn by: TVC

Checked by: KS

Scale: 1:8

F10F02

Revision #: 04

Revised by: KAB

Date: 3/13/2024

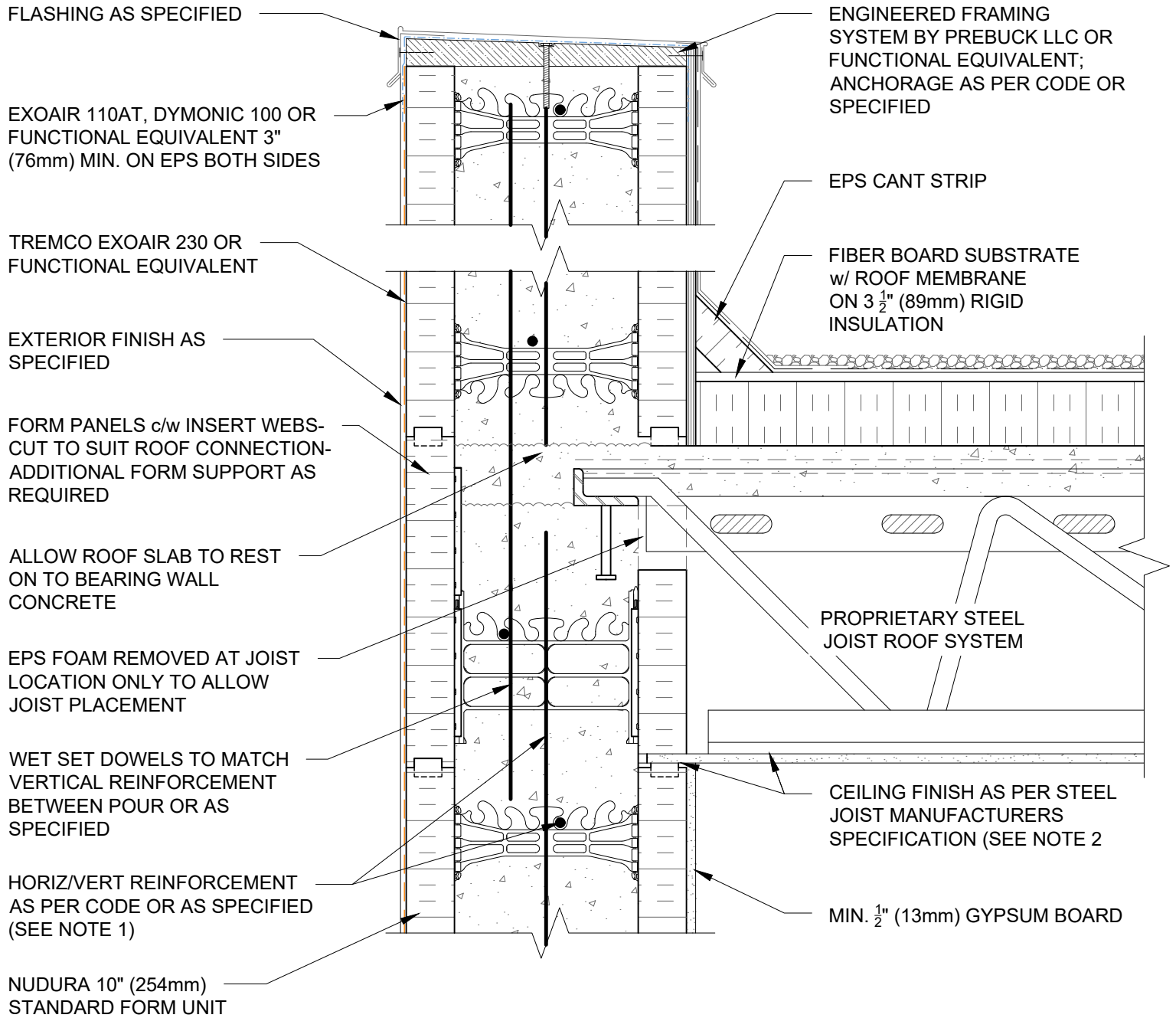
www.tremcocpg.com



Nudura Technical Support: 866-468-6299
International: +1 705-726-9499



Construction Products Group



NOTES:

1) FOR OPTIMAL REINFORCEMENT PLACEMENT IN THE NUDURA FORM, SPACING OF HORIZONTAL REINFORCEMENT TO BE SPECIFIED AT 18" (457mm) O.C. AND VERTICAL REINFORCEMENT TO BE SPECIFIED AT MULTIPLES OF 8" (203mm) O.C. REFER TO NUDURA REINFORCEMENT PLACEMENT DETAILS.

2) WHERE GYPSUM BOARD IS REQUIRED TO COMPLETE FIRE RATED ASSEMBLY, EPS FOAM KERF CUT TO ENABLE CEILING FINISH TO PROVIDE THERMAL BARRIER CONTACT TO CONCRETE.

This detail is for general informational purposes, only. The project design professional determines, in its sole discretion, whether this detail or a functionally equivalent detail is best suited for the project with respect to any architecture, engineering, and design requirements, including any local building code requirements. If this document is not reviewed and the product is not approved for use by a licensed design professional, the customer agrees that the detail may contain substantive flaws requiring correction, and hereby releases Tremco CPG Inc. and Prebuck, LLC from any and all liability related to the design and installation of the product. This detail is subject to change without notice. Contact Tremco and Prebuck to ensure you have the most recent version.

Non-Combustible Construction - Roof Connections

Detail: Nudura 10" (254mm) Form Unit, Steel Joist Roof, Exterior Wall, Exterior Finish as Specified

Drawn by: TVC

Checked by: KS

Scale: 1:8

Revision #: 04

Revised by: KAB

Date: 3/13/2024

File Name:

F10F03



Nudura Technical Support: 866-468-6299
International: +1 705-726-9499

www.tremcocpg.com



Construction Products Group

FLASHING AS SPECIFIED

EXOAIR 110AT, DYMONIC 100 OR
FUNCTIONAL EQUIVALENT 3"
(76mm) MIN. ON EPS BOTH SIDES

TREMCO EXOAIR 230 OR
FUNCTIONAL EQUIVALENT

EXTERIOR FINISH AS
SPECIFIED

ALLOW ROOF SLAB TO REST
ON TO BEARING WALL
CONCRETE

FORM PANELS c/w INSERT
WEBS- CUT TO SUIT ROOF
CONNECTION- ADDITIONAL
FORM SUPPORT AS REQUIRED

WET SET DOWELS TO MATCH
VERTICAL REINFORCEMENT
BETWEEN POUR OR AS
SPECIFIED

NUDURA 10" (254mm) STANDARD
FORM UNIT

HORIZ/VERT REINFORCEMENT
AS PER CODE OR AS
SPECIFIED (SEE NOTE 1)

ENGINEERED FRAMING
SYSTEM BY PREBUCK LLC OR
FUNCTIONAL EQUIVALENT;
ANCHORAGE AS PER CODE OR
SPECIFIED

EPS CANT STRIP

FIBER BOARD SUBSTRATE
w/ ROOF MEMBRANE
ON 3 1/2" (89mm) RIGID
INSULATION

PROPRIETARY STEEL
JOIST FLOOR SYSTEM

CEILING FINISH AS PER STEEL
JOIST MANUFACTURERS
SPECIFICATION (SEE NOTE 2)

MIN. 1/2" (13mm) GYPSUM BOARD

NOTES:

1) FOR OPTIMAL REINFORCEMENT PLACEMENT IN THE NUDURA FORM, SPACING OF HORIZONTAL REINFORCEMENT TO BE SPECIFIED AT 18" (457mm) O.C. AND VERTICAL REINFORCEMENT TO BE SPECIFIED AT MULTIPLES OF 8" (203mm) O.C. REFER TO NUDURA REINFORCEMENT PLACEMENT DETAILS.

2) WHERE GYPSUM BOARD IS REQUIRED TO COMPLETE FIRE RATED ASSEMBLY, EPS FOAM KERF CUT TO ENABLE CEILING FINISH TO PROVIDE THERMAL BARRIER CONTACT TO CONCRETE.

This detail is for general informational purposes, only. The project design professional determines, in its sole discretion, whether this detail or a functionally equivalent detail is best suited for the project with respect to any architecture, engineering, and design requirements, including any local building code requirements. If this document is not reviewed and the product is not approved for use by a licensed design professional, the customer agrees that the detail may contain substantive flaws requiring correction, and hereby releases Tremco CPG Inc. and Prebuck, LLC from any and all liability related to the design and installation of the product. This detail is subject to change without notice. Contact Tremco and Prebuck to ensure you have the most recent version.

Non-Combustible Construction - Roof Connections



Nudura Technical Support: 866-468-6299
International: +1 705-726-9499

Detail: Nudura 10" (254mm) Form Unit, Steel Joist Roof, Exterior Side Wall,
Exterior Finish as Specified

Drawn by: TVC

Checked by: KS

Scale: 1:8

Revision #: 04

Revised by: KAB

Date: 3/13/2024

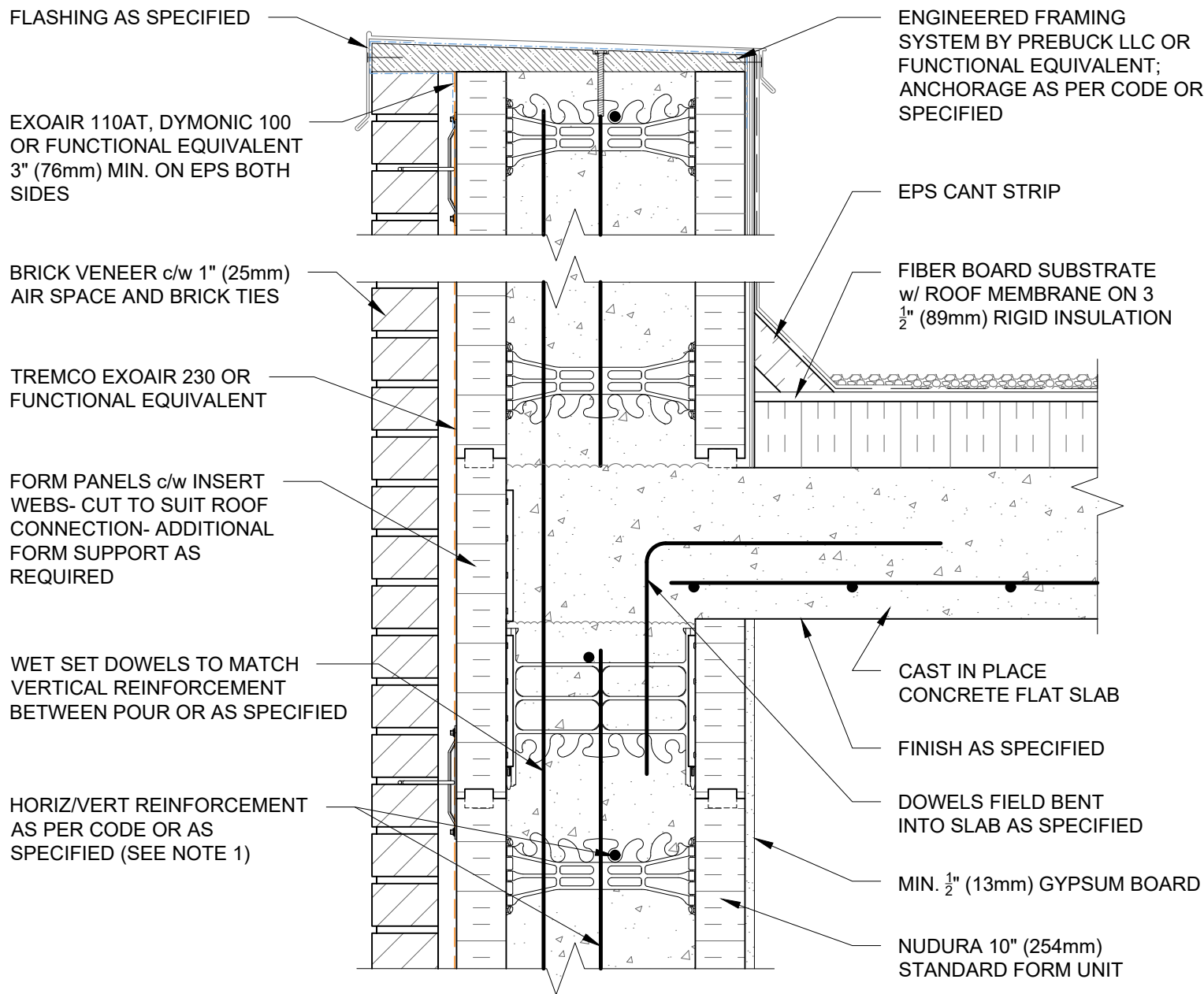
File Name:

F10F04



Construction Products Group

www.tremcocpg.com



NOTES:

1) FOR OPTIMAL REINFORCEMENT PLACEMENT IN THE NUDURA FORM, SPACING OF HORIZONTAL REINFORCEMENT TO BE SPECIFIED AT 18" (457mm) O.C. AND VERTICAL REINFORCEMENT TO BE SPECIFIED AT MULTIPLES OF 8" (203mm) O.C. REFER TO NUDURA REINFORCEMENT PLACEMENT DETAILS.

This detail is for general informational purposes, only. The project design professional determines, in its sole discretion, whether this detail or a functionally equivalent detail is best suited for the project with respect to any architecture, engineering, and design requirements, including any local building code requirements. If this document is not reviewed and the product is not approved for use by a licensed design professional, the customer agrees that the detail may contain substantive flaws requiring correction, and hereby releases Tremco CPG Inc. and Prebuck, LLC from any and all liability related to the design and installation of the product. This detail is subject to change without notice. Contact Tremco and Prebuck to ensure you have the most recent version.

Non-Combustible Construction - Roof Connections



Nudura Technical Support: 866-468-6299
International: +1 705-726-9499

Detail: Nudura 10" (254mm) Form Unit, Concrete Flat Plate, Exterior Bearing Wall, Brick Veneer Finish

Drawn by: KS

Checked by: KS

Scale: 1:8

Revision #: 01

Revised by: KAB

Date: 3/13/2024

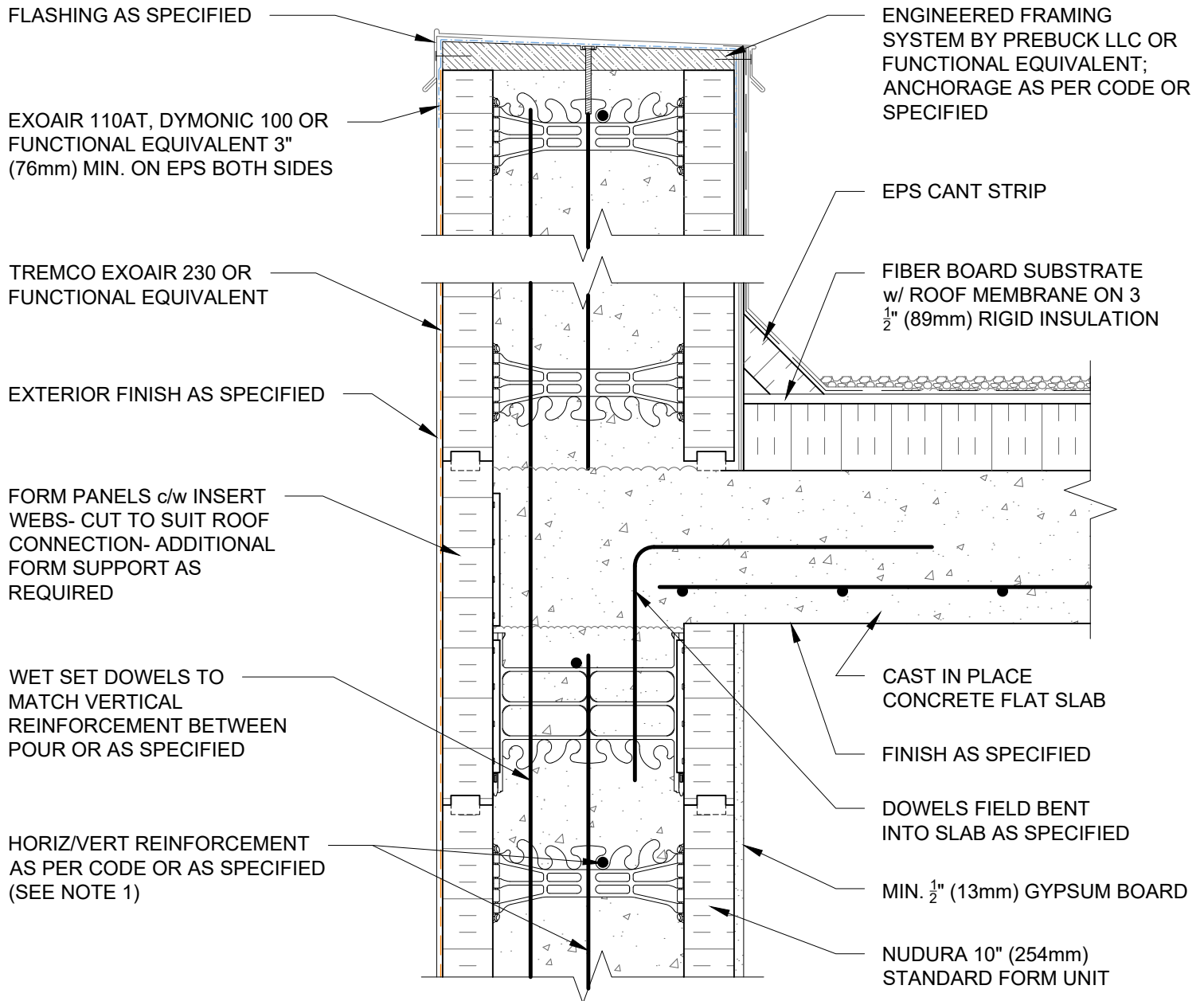
File Name:

F10G01



Construction Products Group

www.tremcocpg.com



NOTES:

1) FOR OPTIMAL REINFORCEMENT PLACEMENT IN THE NUDURA FORM, SPACING OF HORIZONTAL REINFORCEMENT TO BE SPECIFIED AT 18" (457mm) O.C. AND VERTICAL REINFORCEMENT TO BE SPECIFIED AT MULTIPLES OF 8" (203mm) O.C. REFER TO NUDURA REINFORCEMENT PLACEMENT DETAILS.

This detail is for general informational purposes, only. The project design professional determines, in its sole discretion, whether this detail or a functionally equivalent detail is best suited for the project with respect to any architecture, engineering, and design requirements, including any local building code requirements. If this document is not reviewed and the product is not approved for use by a licensed design professional, the customer agrees that the detail may contain substantive flaws requiring correction, and hereby releases Tremco CPG Inc. and Prebuck, LLC from any and all liability related to the design and installation of the product. This detail is subject to change without notice. Contact Tremco and Prebuck to ensure you have the most recent version.

Non-Combustible Construction - Roof Connections



Nudura Technical Support: 866-468-6299
International: +1 705-726-9499

Detail: Nudura 10" (254mm) Form Unit, Concrete Flat Plate, Exterior Bearing Wall,
Exterior Finish as Specified

Drawn by: KS

Checked by: KS

Scale: 1:8

Revision #: 01

Revised by: KAB

Date: 3/13/2024

File Name:

F10G02



Construction Products Group

www.tremcocpg.com